

Something Better with Chemicals



DAISO CO., LTD.

FACT BOOK 2011

Year ended March 31, 2011

◆ Corporate Profile

Company Name	DAISO Co., Ltd.
President	Tamotsu Sato
Location	1-12-18, Awaza, Nishi-ku, Osaka 550-0011, Japan Telephone: +81-6-6110-1560 Facsimile: +81-6-6110-1603
Website URL	http://www.daiso.co.jp
Establishment	October 26, 1915
Capital	¥10,882 million
Number of Employees	761(Consolidated)

◆ Main Products

Basic Chemical Products	Caustic Soda, Hydrochloric Acid, Liquid Chlorine, Chlorine Gas, Caustic Potash, Sodium Hypochlorite, Sodium Chlorite, Sodium Chlorate, Hydrogen Gas, Epichlorohydrin, Allyl Chloride, Dichloropropene, Paint Materials, Adhesive Materials etc.
Functional Chemical Products	Allyl Derivatives, Epichlorohydrin Rubber 'EPICHLOMER®', Diallyl Phthalates 'DAISO DAP®', Polysulfide System Silane Coupling Agent 'CABRUS®', 'DAISOGEL®' Silica for HPLC, Lens Materials, Photosensitive Resin, Color Resist, Materials for LCD, Electrodes 'SPLODE®', Optically Active Substances, Bulk Pharmaceuticals and Intermediates, Material Recycle etc.
Housing Facilities and others	DAP Decorative Board, Housing Facilities, Health Food, Chemicals Plant, Environmental preservation facilities etc.

I . Consolidated statements of income

II . Consolidated balance sheets

III . Main management index

IV . Segment information

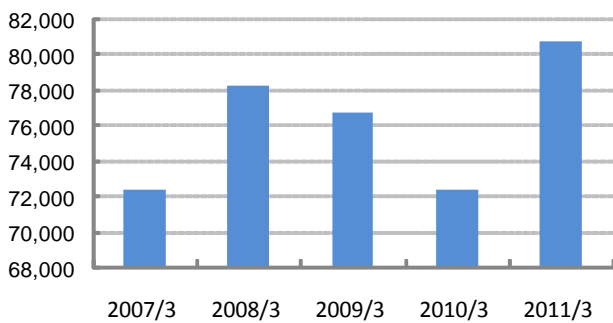
V . Consolidated cash flows and capital investment

Consolidated statements of income

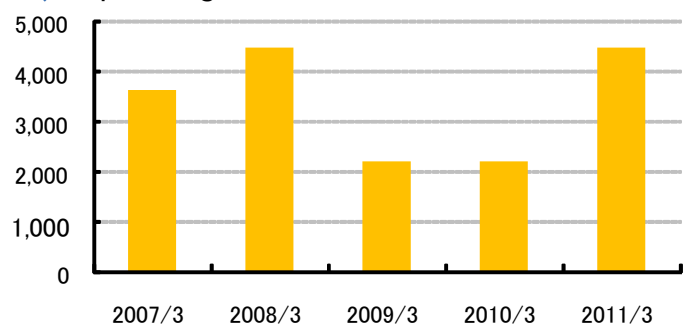
Unit : Millions of yen

	2002/3	2003/3	2004/3	2005/3	2006/3	2007/3	2008/3	2009/3	2010/3	2011/3
Net Sales	47,484	58,278	57,118	62,022	66,737	72,398	78,229	76,726	72,404	80,757
Cost of Sales	38,492	48,641	47,316	50,985	54,162	58,556	63,377	64,377	60,807	66,595
Gross Profit	8,992	9,636	9,801	11,037	12,575	13,841	14,851	12,349	11,596	14,162
Selling, General and Administrative Expenses	7,905	8,320	8,272	8,935	9,422	10,230	10,383	10,164	9,408	9,691
Operating Income	1,086	1,316	1,529	2,101	3,153	3,610	4,468	2,184	2,188	4,470
Non-operating Income	391	505	293	290	386	321	455	376	334	416
Non-operating Expenses	457	671	436	372	375	196	391	467	337	267
Ordinary Income	1,021	1,149	1,386	2,020	3,163	3,735	4,532	2,093	2,185	4,618
Extraordinary Income	285	307	532	830	351	2	0	398	36	10
Extraordinary Losses	668	1,070	583	1,116	488	576	315	1,221	530	863
Income before Income Taxes	637	386	1,335	1,733	3,026	3,161	4,217	1,270	1,691	3,765
Income Taxes (Current and Deferred)	436	278	694	806	1,292	1,187	1,728	525	743	1,340
Net Income	200	108	641	927	1,734	1,974	2,489	745	947	2,425

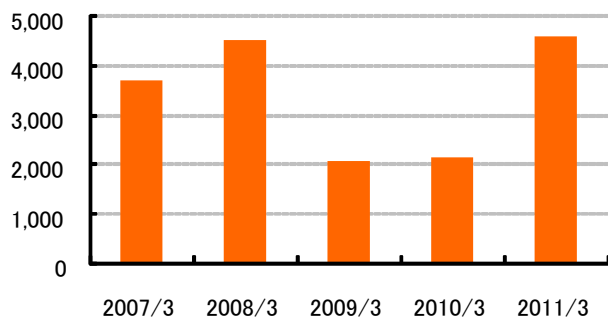
◆ Net Sales



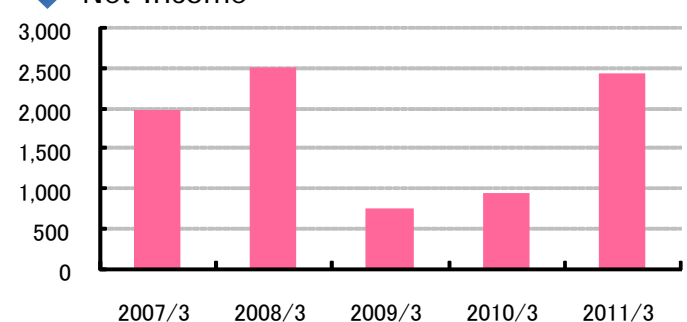
◆ Operating Income



◆ Ordinary Income



◆ Net Income



II. Consolidated balance sheets

Unit : Millions of yen

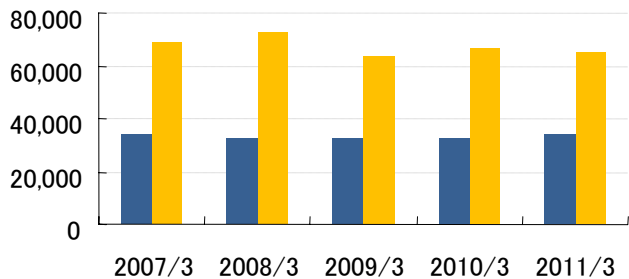
	2002/3	2003/3	2004/3	2005/3	2006/3	2007/3	2008/3	2009/3	2010/3	2011/3
Current Assets	26,840	24,838	27,848	31,556	32,480	35,326	38,825	32,092	36,679	37,613
Fixed Assets	23,504	22,457	23,412	25,610	31,017	33,292	33,537	31,633	30,000	27,600
Property, Plant and Equipment	15,380	14,949	14,071	14,407	14,872	16,839	18,962	19,244	16,847	15,287
Intangible Fixed Assets	525	616	736	678	892	1,242	1,180	970	764	606
Investments and Other Assets	7,598	6,892	8,604	10,524	15,253	15,209	13,394	11,418	12,388	11,706
Total Assets	50,344	47,295	51,260	57,167	63,498	68,618	72,362	63,726	66,680	65,214
Current Liabilities	22,072	19,110	17,088	18,403	19,983	24,645	23,820	18,188	21,469	26,371
Non-Current Liabilities	9,042	9,247	13,508	12,783	10,513	10,349	15,726	13,122	12,424	5,241
Total Liabilities	31,115	28,357	30,597	31,186	30,496	34,994	39,546	31,311	33,893	31,612
Shareholders' Equity										
Common Stock	6,282	6,282	6,282	8,694	10,435	-	-	-	-	-
Additional Paid-in Capital	4,798	-	-	-	-	-	-	-	-	-
Capital Surplus	-	4,798	4,798	7,208	8,947	-	-	-	-	-
Consolidated Surplus	6,966	-	-	-	-	-	-	-	-	-
Retained Earnings	-	6,923	7,216	7,557	8,745	-	-	-	-	-
Net Unrealized Holding Gains on Securities	1,181	1,038	2,476	2,645	5,025	-	-	-	-	-
Treasury Stock	-1	-105	-110	-124	-151	-	-	-	-	-
Net Assets										
Common Stock	-	-	-	-	-	10,488	10,644	10,882	10,882	10,882
Capital Surplus	-	-	-	-	-	9,000	9,156	9,394	9,394	9,394
Retained Earnings	-	-	-	-	-	9,968	11,754	11,838	11,998	13,773
Treasury Stock	-	-	-	-	-	-161	-177	-201	-778	-1,647
Other Comprehensive Income	-	-	-	-	-	4,317	1,403	437	1,217	1,128
Stock Acquisition Rights	-	-	-	-	-	8	34	64	72	70
Total Net Assets	19,229	18,937	20,663	25,980	33,001	33,623	32,816	32,414	32,786	33,601
Total Liabilities and Net Assets	50,344	47,295	51,260	57,167	63,498	68,618	72,362	63,726	66,680	65,214



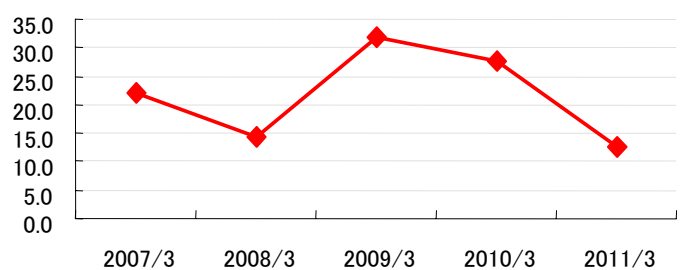
III. Main management index

<Consolidated>	2002/3	2003/3	2004/3	2005/3	2006/3	2007/3	2008/3	2009/3	2010/3	2011/3
Net assets (Millions of yen)	19,229	18,937	20,663	25,980	33,001	33,623	32,816	32,414	32,786	33,601
Total assets (Millions of yen)	50,344	47,295	51,260	57,167	63,498	68,618	72,362	63,726	66,680	65,214
Net assets per share (yen)	241.29	238.95	260.82	268.83	304.89	310.03	299.56	291.65	301.75	318.11
Earnings per share (yen)	2.52	0.96	7.70	10.13	16.51	18.23	22.80	6.76	8.59	22.47
Fully diluted earnings per share (yen)	-	-	7.68	10.09	16.10	18.10	21.01	5.91	7.60	19.82
Shareholder's equity ratio (%)	38.2	40.0	40.3	45.4	52.0	49.0	45.3	50.8	49.1	51.4
Return on equity (%)	1.0	0.6	3.2	4.0	5.9	5.9	7.5	2.3	2.9	7.3
Price earnings ratio (%)	78.6	202.1	38.1	34.2	28.8	22.2	14.3	31.8	27.6	12.7
Cash flows from operating activities (Millions of yen)	1,049	2,539	1,323	2,928	2,520	2,801	3,404	4,217	7,012	5,370
Cash flows from investing activities (Millions of yen)	-2,692	-2,411	-1,037	-3,314	-3,683	-5,316	-8,155	-4,290	-1,510	-1,312
Cash flows from financing activities (Millions of yen)	3,063	-1,303	1,313	1,658	-738	1,610	6,798	-787	-3,363	-4,726
Cash and cash equivalents at end of year (Millions of yen)	4,639	3,463	5,062	6,335	4,434	3,557	5,527	4,437	6,522	5,764
Number of employees	751	732	722	717	708	716	718	745	748	761

■ Net assets ■ Total assets



Price earnings ratio



<Single Entity>	2002/3	2003/3	2004/3	2005/3	2006/3	2007/3	2008/3	2009/3	2010/3	2011/3
Net assets (Millions of yen)	19,200	18,899	20,530	25,773	32,577	32,992	32,010	31,266	31,474	31,615
Total assets (Millions of yen)	46,383	43,323	47,400	52,633	58,364	62,755	67,204	59,127	61,181	57,859
Net assets per share (yen)	240.93	238.46	259.13	266.69	300.96	304.20	292.20	281.29	289.65	299.27
Earnings per share (yen)	2.78	0.81	6.73	9.30	14.50	16.29	20.47	3.53	6.17	16.15
Dividend per share (yen)	4.00	4.00	4.00	5.00	6.00	6.00	6.00	6.00	6.00	7.00
Fully diluted earnings per share (yen)	-	-	6.71	9.26	14.14	16.17	18.86	3.08	5.45	14.25
Shareholder's equity ratio (%)	41.4	43.6	43.3	49.0	55.8	52.6	47.6	52.8	51.3	54.5
Return on equity (%)	1.2	0.5	2.9	3.7	5.2	5.4	6.9	1.2	2.2	5.5
Price earnings ratio (%)	71.2	239.5	43.5	37.2	32.8	24.9	15.9	60.9	38.4	17.6
Dividend payout ratio (%)	143.9	492.0	59.4	53.8	41.4	36.8	29.3	170.0	97.3	43.3
Number of employees	626	616	608	595	603	607	608	576	532	527

IV. Segment information

◆ Net Sales

Unit : Millions of yen

Accounting period	2007/3	2008/3	2009/3	2010/3	2011/3
Basic Chemical Products	38,462	41,094	39,023	34,689	38,098
Functional Chemical Products	24,209	27,767	25,343	26,063	29,827
Housing Facilities and others	9,726	9,367	12,360	11,650	12,831

◆ Operating income

Unit : Millions of yen

Accounting period	2007/3	2008/3	2009/3	2010/3	2011/3
Basic Chemical Products	2,237	2,803	2,652	2,574	2,803
Functional Chemical Products	2,058	2,364	111	595	2,669
Housing Facilities and others	37	81	345	-7	167

◆ Operating income ratio

Unit : Millions of yen

Accounting period	2007/3	2008/3	2009/3	2010/3	2011/3
Basic Chemical Products	5.8	6.8	6.8	7.4	7.4
Functional Chemical Products	8.5	8.5	0.4	2.3	8.9
Housing Facilities and others	0.4	0.9	2.8	-0.1	1.3

* From the year ended March 31, 2010, the company reclassified its business segment information in accordance with new segment accounting standard.

V. Consolidated cash flows and capital investment

<Consolidated>

Unit : Millions of yen

Accounting period	2007/3	2008/3	2009/3	2010/3	2011/3
Cash and cash equivalents at beginning of year	4,434	3,557	5,527	4,437	6,522
Operating activities	2,801	3,404	4,217	7,012	5,370
Investing activities	-5,316	-8,155	-4,290	-1,510	-1,312
Free cash flows	-2,515	-4,751	-73	5,502	4,058
Financing activities	1,610	6,798	-787	-3,363	-4,726
Cash and cash equivalents at end of year	3,557	5,527	4,437	6,522	5,764

Depreciation	2,319	3,025	3,448	3,386	3,008
Capital expenditures	4,857	5,908	4,614	2,040	1,279
Research and development expenses	2,009	1,666	1,737	1,570	1,549



DAISO CO., LTD.

